

Customer :

customer

Customer part :

customer part

Comment :

Comment

S1=2.68

S2=3.26

Tmax=465

Tp S2=504.0

PI=0.45

HI=80

Sample =1722.30

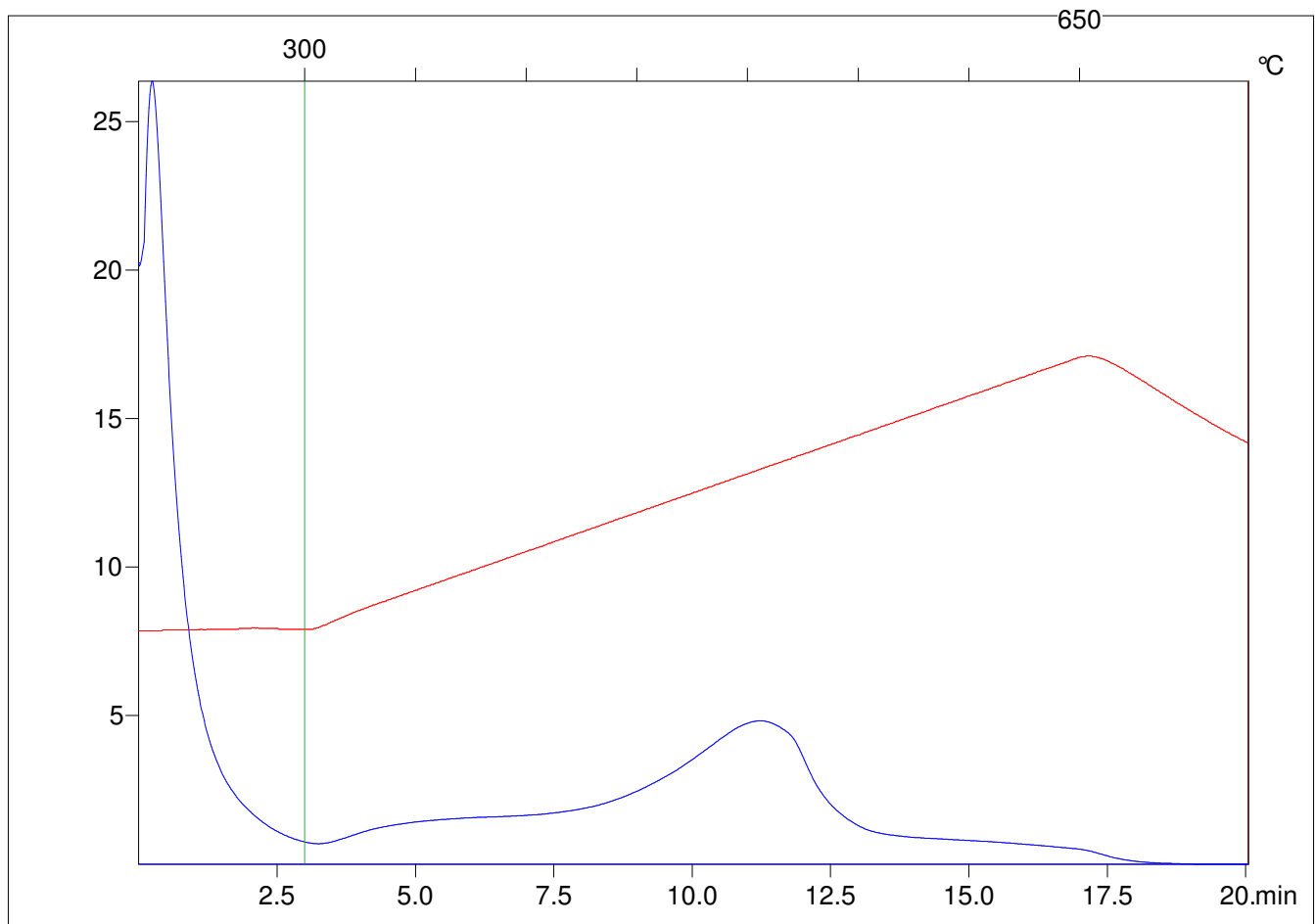
Method =Bulk Rock

Cycle=Basic

KFID(10*9)=1444

Qty =70.1

TOC=4.09



C:\VINC\PK2_1792\PK032.R00 : FID pyrolysis graphic

State

Pyro Status

Oxi Status